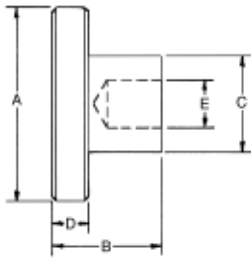


Knurled Knobs with reamed hole



- Available in carbon steel with black oxide finish and 303 stainless steel
- Reamed hole
- Diamond knurl

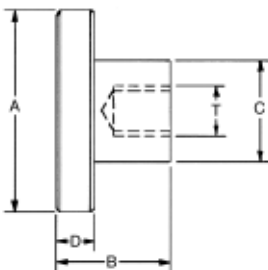


Steel PART #	Stainless Steel PART #	Reamed Hole				
		E	A	B	C	D
KK-10	KK-10SS	3/16	3/4	5/8	1/2	1/4
KK-11	KK-11SS	1/4	3/4	5/8	1/2	1/4
KK-12	KK-12SS	1/4	1	3/4	5/8	1/4
KK-13	KK-13SS	5/16	1	3/4	5/8	1/4
KK-14	KK-14SS	5/16	1-1/2	1	3/4	5/16
KK-15	KK-15SS	3/8	1-1/2	1	3/4	5/16
KK-16	KK-16SS	3/8	2	1-1/8	1	3/8
KK-17	KK-17SS	1/2	2	1-1/8	1	3/8
KK-18	-	1/2	2-1/2	1-1/2	1-1/2	9/16
KK-19	-	5/8	2-1/2	1-1/2	1-1/2	9/16
KK-20	-	5/8	3	1-3/4	1-3/4	5/8
KK-21	-	3/4	3	1-3/4	1-3/4	5/8

Knurled Knobs with tapped hole



- Available in carbon steel with black oxide finish and 303 stainless steel
- Tapped hole
- Knurled head
- Diamond knurl
- Metric knobs have through hole thread



Steel PART #	Stainless Steel PART #	INCH THREAD				
		Thread T	A	B	C	D
KK-30	KK-30SS	#10-24	3/4	5/8	1/2	1/4
KK-31	KK-31SS	1/4-20	3/4	5/8	1/2	1/4
KK-32	KK-32SS	1/4-20	1	3/4	5/8	1/4
KK-33	KK-33SS	5/16-18	1	3/4	5/8	1/4
KK-34	KK-34SS	5/16-18	1-1/2	1	3/4	5/16
KK-35	KK-35SS	3/8-16	1-1/2	1	3/4	5/16
KK-36	KK-36SS	3/8-16	2	1-1/8	1	3/8
KK-37	KK-37SS	1/2-13	2	1-1/8	1	3/8
KK-38	-	1/2-13	2-1/2	1-1/2	1-1/2	9/16
KK-39	-	5/8-11	2-1/2	1-1/2	1-1/2	9/16
KK-40	-	5/8-11	3	1-3/4	1-3/4	5/8
KK-41	-	3/4-10	3	1-3/4	1-3/4	5/8

PART #	METRIC THREAD (THRU-HOLE)				
	Thread	A	B	C	D
KK-70	M3 x .5	12mm	6mm	7.5mm	2.5mm
KK-71	M4 x .7	16	8	9.5	3.5
KK-72	M5 x .8	20	10	11.5	4
KK-73	M6 x 1.0	24	12	16	5
KK-74	M8 x 1.25	30	16	18	6
KK-75	M10 x 1.5	36	20	23	8